

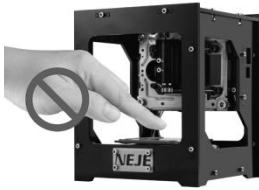


For Dual usb Series \ GRBL Series \ Bluetooth Series

Please read it carefully before use

# Important safety information

- \* Please don't touch the laser when the machine is working.



- \* The laser not have Radiation, but when it working, the temperature will get 400 centigrade, So please do not remove the laser to shoot eyes.
- \* The Machine product through CE seriously, safety and not have radiation.

CE certification Safety not Have **Radiation**



- \* The Machine is powered by 5V USB charger, Don't use other power.
- \* The glasses in the packing list is used for FOCUS LENTH CONTROL.
- \* Please stay away from flammable objects.
- \* Suggested use time not more than an hour at a time.
- \* When using the machine, please away from the children.
- \* Please pay attention to keep the surface of the machine clean.
- \* Please place the machine in flat desktop.
- \* Power by security and polymer battery, no explosion risk of spontaneous combustion.
- \* Machine for a long time no touch, can automatic dormancy.

1

Cloud Services



[www.trusfer.com](http://www.trusfer.com)

Official will be based on user feedback continuously upgrade and provide FAQ, Video , Software download for customer.

2

open package



Package listing:

Machine x 1

Focusing Glasses x 1

Data/Power Cable(Mini usb to usb) x 1

Power Cable(usb to usb) x 1 ( DK-BL not included )

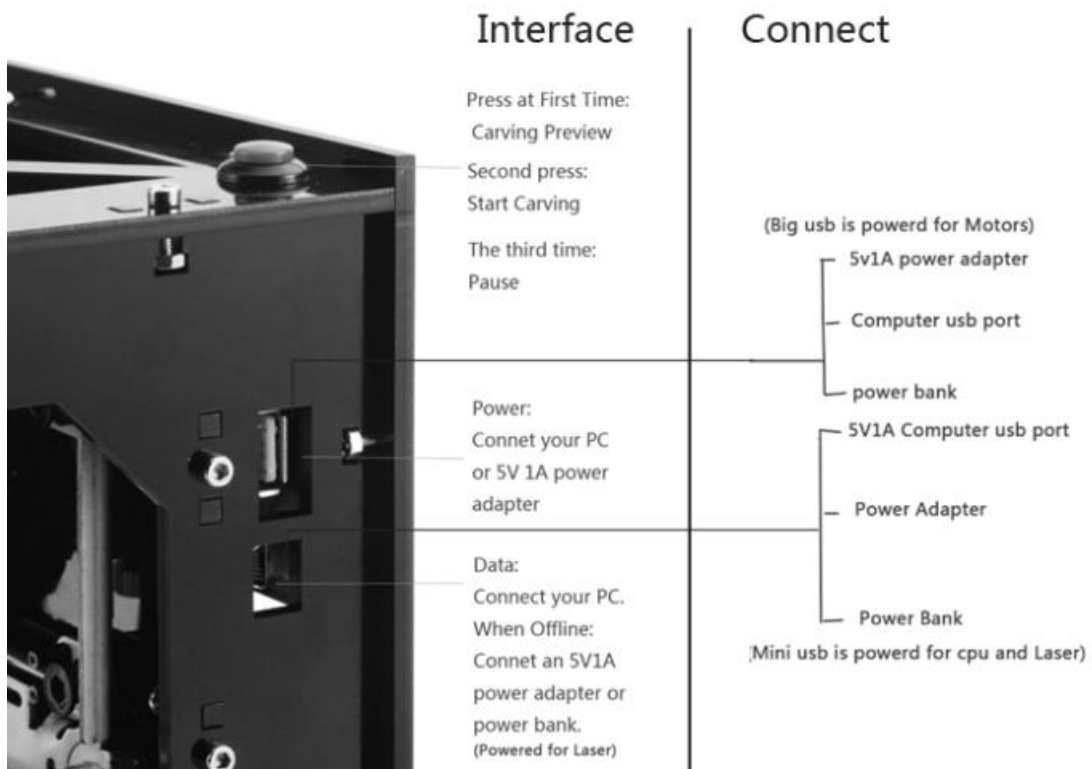
L-TYPE WRENCH x 1

tf card(drive / software etc.) x 1

Manual x 1

3

Interface and Connect



Before you can use a computer and printer for printing, you need to install printer driver which allow the printer communicate with the computer, furthermore you need to install application software on your computer so that you can start your printing. The same situation applies to the Laser Engrave, you need to install the driver which allow the Laser Engrave talk to the computer, and you need to install the engraver software in order to control the Laser Engraver.

NEJE Engraver come with a 1GB micro SD card, the files on the SD card including the driver, engraver software and few JPG photos as shown in figure below. The dure usb series software can be running on Win XP, Win 7, Win 8, Win 10, Mac, system. The Grbl series software can be running on win xp, win 7, win8, win 10. The bluetooth series software can be running on win xp, win7, win8, win10, ios, android.

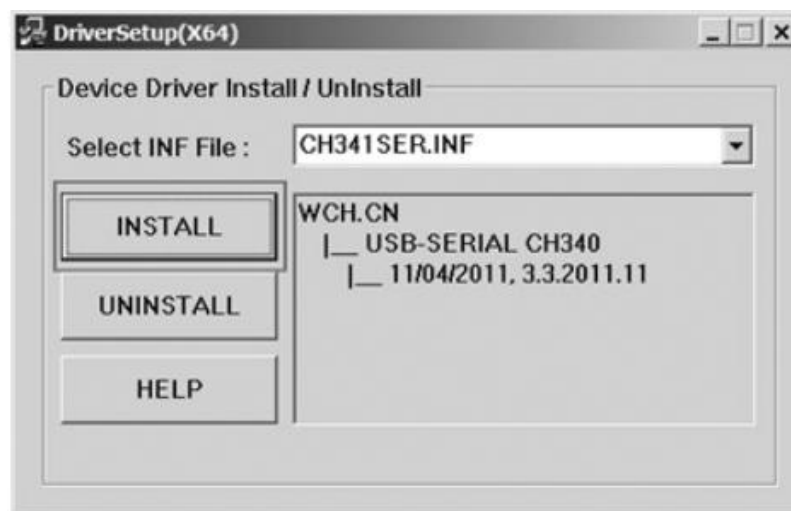
Alternately, the software can be download from the link below:

<http://www.trusfer.com/#Download>

## Step 1: Driver Setup

As mentioned above, the SD card consisting of the driver that you can install into your computer.

1. Do not connect the Laser Engraver to your computer.
2. Copy all the folders & files from SD card to your computer.
3. Browse to the folder until you see the Driver.exe executable file.
4. Double-clicking the Driver.exe file, the driver setup menu should open up.
5. Click on the INSTALL button to start the driver installation



6. [Connect the Laser Engraver](#) to computer via a Mini USB data cable (without connect the USB A-A power cable), your computer should detected the USB-Serial and the laser beam is emitted from the Laser Head.

7. Open "Device Manager" from the Windows "System Properties", check to see whether the driver is installed correctly.



## **Step 2: Connecting the usb cable to computer**

---

The 5V 1A power adapter is connected to the laser engraver via a USB A-A cable, and the data port on laser engraver is connected to the computer's USB port via a Mini USB cable. When connected the two usb cable, the machine will self-acting.

## **Step 3: Adjusting focal length**

---

Before engraving, make sure adjust the focus of the laser lens corresponding to the thickness of the material.

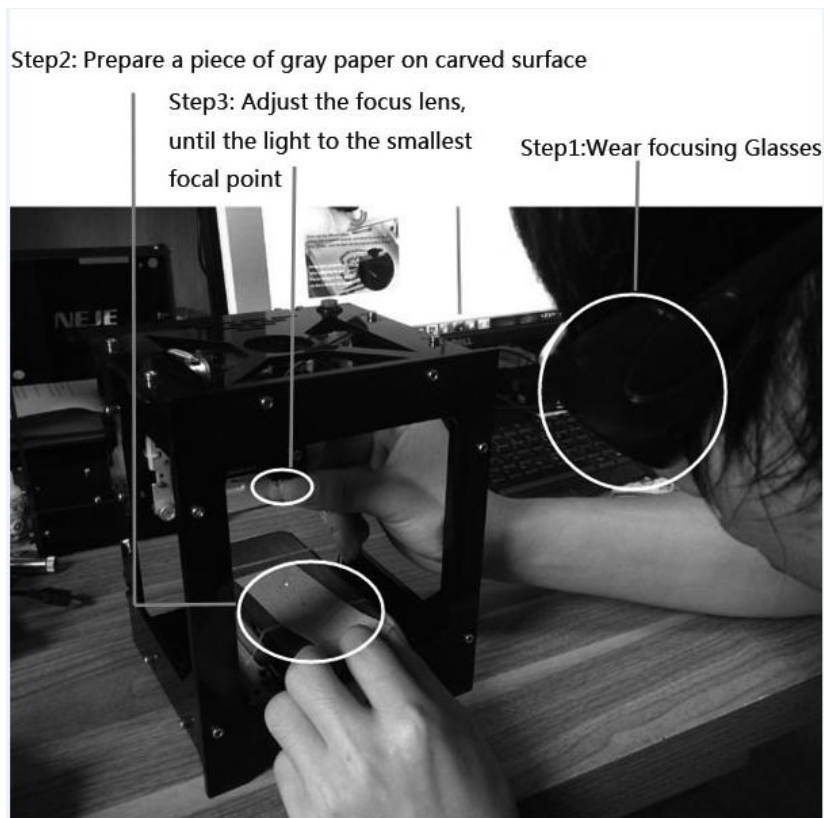
1. wear the Focusing glasses



2. Adjusting focal length when the light point is the minimal point

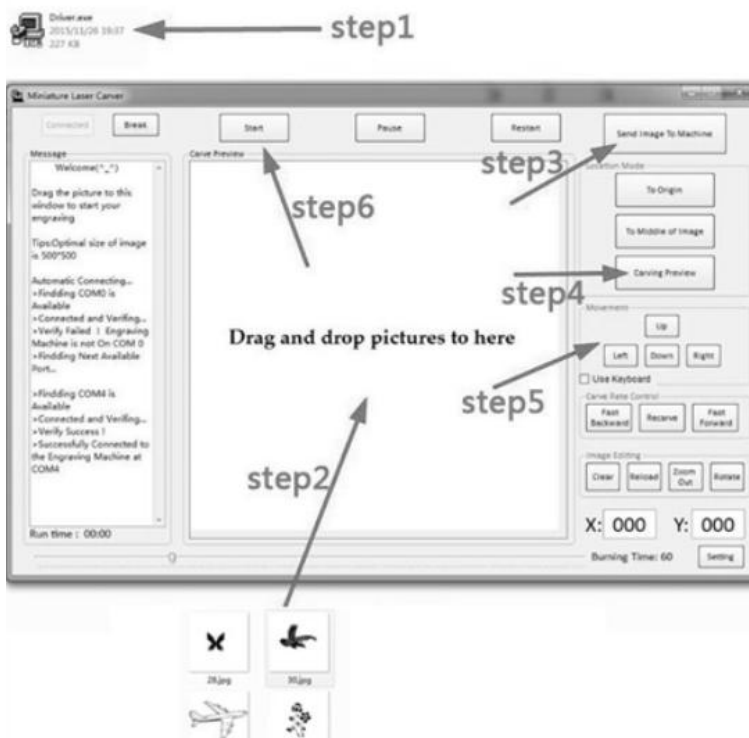
The carving effect is mainly decided by the three factors:

- a. Burning time (Affect the engraving depth )
- b. Carving material ( Most of the organic material can be carved )
- c. Adjusting focal length (different thickness of the object is different )



## Step 4: Open the software and Start

When the img have send to the machine, it will connect the machine self-acting. you can adjust the engraving area before start.



Specification	
Supporting OS :	win XP , win7 , win8 , win10 , MAC
DPI:	350dpi
Laser Wavelength: :	405nm
Temperature :	400 degree celsius
Support Software :	Laser_Carver
Download :	<a href="http://www.trusfer.com/#Download">http://www.trusfer.com/#Download</a>
Image Format :	Jpg\BMP\PNG
Image Size: :	512x512 pixels
Engrave Mode :	Bitmap carving
Input :	Dual USB(5V 1A)
Voltage:	4.2-5.5V
Certificate:	CE
Carving area:	38 x 38mm ( DK-BL: 42 x 42mm)
Laser can replace:	YES
Every work time:	< 1 hour
Laser Warranty time:	3 month (Laser and control board)

Note: The specification is suitable for dure usb series, different model have different specification, the more detail please sign into the site:  
[www.trusfer.com](http://www.trusfer.com)

## FAQ:

### **a. Unable to connect ?**

- To ensure the success of the driver installation
- Data cable is connected to the computer
- Make sure the computer's usb port is ok
- Make sure the machine's usb port is ok

### **b. Carving half suddenly stopped, and self-acting**

- This is because of the computer's usb power is not enough, you can change a computer or use a 5v1a usb power.

### **c. Laser is broken.**

- the laser tube have a life, if the machine can't engrave, you can change it by a tool in the package.

the replaceable laser tube you can find it on [www.trusfer.com](http://www.trusfer.com).

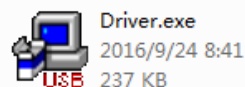
### **d.OEM**

- Welcome to join our business, our email is [wuhonghe126@126.com](mailto:wuhonghe126@126.com)



## 中文版简易使用说明：

第一步：将 tf 卡插入到电脑，安装“驱动”。



第二步：将 usb 线连接好，都插入到电脑 usb 接口后雕刻机会自动检测一次

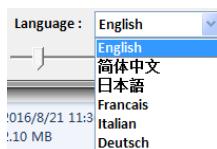
第三步：固定好被雕刻物体，佩戴好眼睛，然后调节好焦距，注意：作品的雕刻效果由 3 点决定：1.软件灼烧时间设置（影响雕刻深度）；2.被雕刻物体材质（大部分有机材料都可以雕刻，尽量确保物体表面平整）；3.焦距调节（调节越细，精度越高）

第四步：打开软件

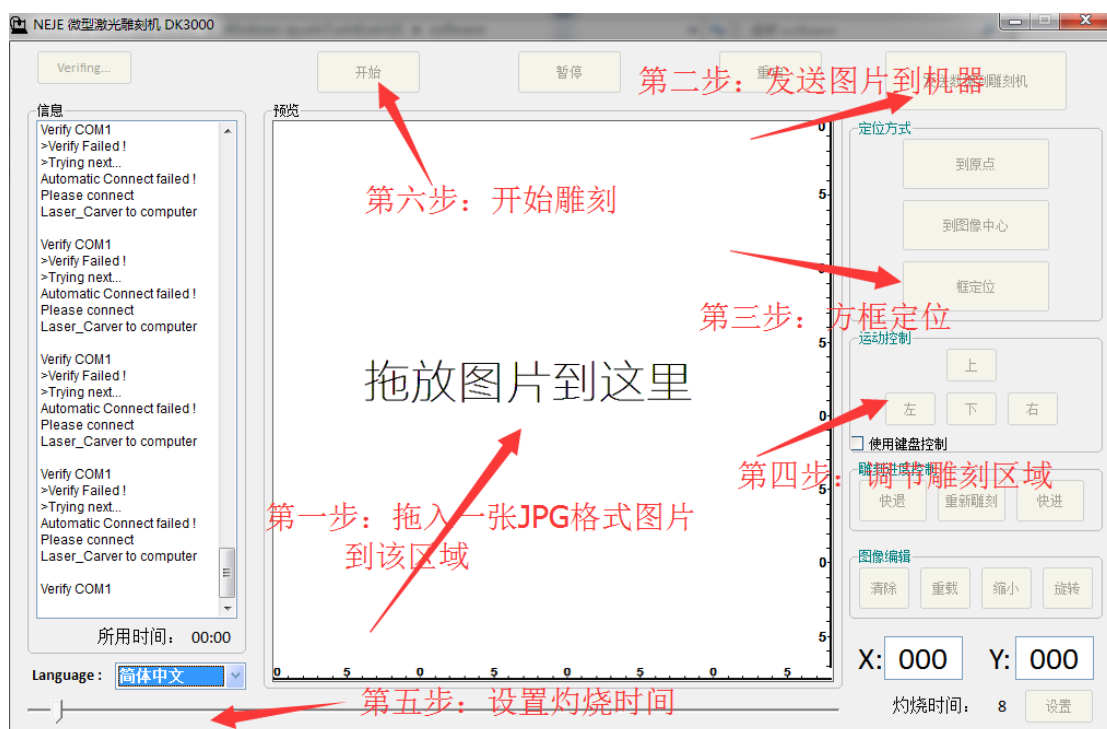


Laser\_Carver\_six\_language\_V3.5.  
1.exe  
Only For Mini Laser\_Carver

将语言栏设置成“简体中文”



，按照以下步骤设置雕刻：



## Laser Graviermaschine USB Gravieren Maschine Gravur

### Beschreibung:

- Unterstützt von unseren professionellen englischen Softwares.
- Professionelles Bitmap-Gravieren.
- Erstklassiges und cooles Design, hohe Genauigkeit und Stabilität.
- Kann Bild bearbeiten.
- Leicht zu benützen, über zwei USB-Schnittstellen an den PC angeschlossen.
- Dank integrierter Schaltung und der Kühlrippe ist die Zeit zum Gravieren länger als andere Maschinen.
- Gravierbare Materialien: Holz, Leder, Siegel, Karte, Papier, Bankkarte, Rubber, Kunststoff, Bambu u.s.w.
- NICHT gravierbare Materialien: Metall, Muschelschale, Spiegel, Glas, Keramik, Stein, Reflexmaterial, transparentes Material u.s.w.

Wenn Sie sich nicht ganz sicher sind, kontaktieren Sie mit uns bitte.

### Technische Daten:

Marke: NEJE

USB: zwei-Ausgang 5V

Spannung: 4.2-5.5V

Material: Acryl + Aluminium + Edelstahl

Bildgröße: 512 x 512 Pixel

Bildformate : jpg

Gravierbereich: 38mmx38mm

Laserklasse : Klasse 2

Support Software: Laser\_Carver

Laserintensität: 500mW

Laser-Wellenlänge: 405 nm

Dicke: <30mm

Unterstützungssysteme : XP, Win7, WIN8, WIN10

Maße: 15.2\*14.9\*18.5cm

Gewicht: ca. 1kg

### Lieferumfang:

- 1 x Laser Graviermaschine
- 1 x Laser Schutzbrille
- 1 x Mini Schraubenschlüssel
- 1 x Englische Kurzanleitung
- 1 x 1GB TF Karte
- 2 x USB Kabel

MADE IN CHINA

**Warranty web site: [www.trusfer.com](http://www.trusfer.com)**

-----版权所有 :深圳市挚信捷科技有限公司